

PINE WOOD

**BUILDING MATERIALS
TRADING LLC**



**The Leading Sustainable
Building Materials Company**

www.pinewood.co.ae

info@pinewood.co.ae

What we do

We are pioneers in providing eco-friendly timber solutions for the construction industry, serving the Middle East, South Asia and Africa

1 Residential

We supply high-quality timber for residential construction, offering durability and refined aesthetics for modern living spaces.



2 Commercial & Educational

We deliver sustainable timber for commercial and educational spaces, enhancing functionality with a commitment to quality and ecological responsibility.



3 Hospitality

We provide the hospitality industry with sustainable timber, engineered for luxury and comfort, ensuring guest experiences are both serene and memorable.



How We Work

We are at the forefront of sustainable construction, offering bespoke prefabricated solutions that epitomize luxury in the Middle East.

With expertise in engineering and installation, we utilize green materials from award-winning producers to create structures that are as sustainable as they are exquisite.

Our network includes top-tier manufacturers and contractors committed to best practices in sustainability, ensuring that every development is a paragon of eco-friendly innovation.

1

Collaboration

With the Client and Consultants to understand the overall project objectives and to guide them on project engineering, fabrication and construction

2

Design for Manufacture & Assembly

Working with the best manufacturers globally, we help design buildings ready to move to manufacturing & installation with efficiency, quality & the latest technical methods (BIM)

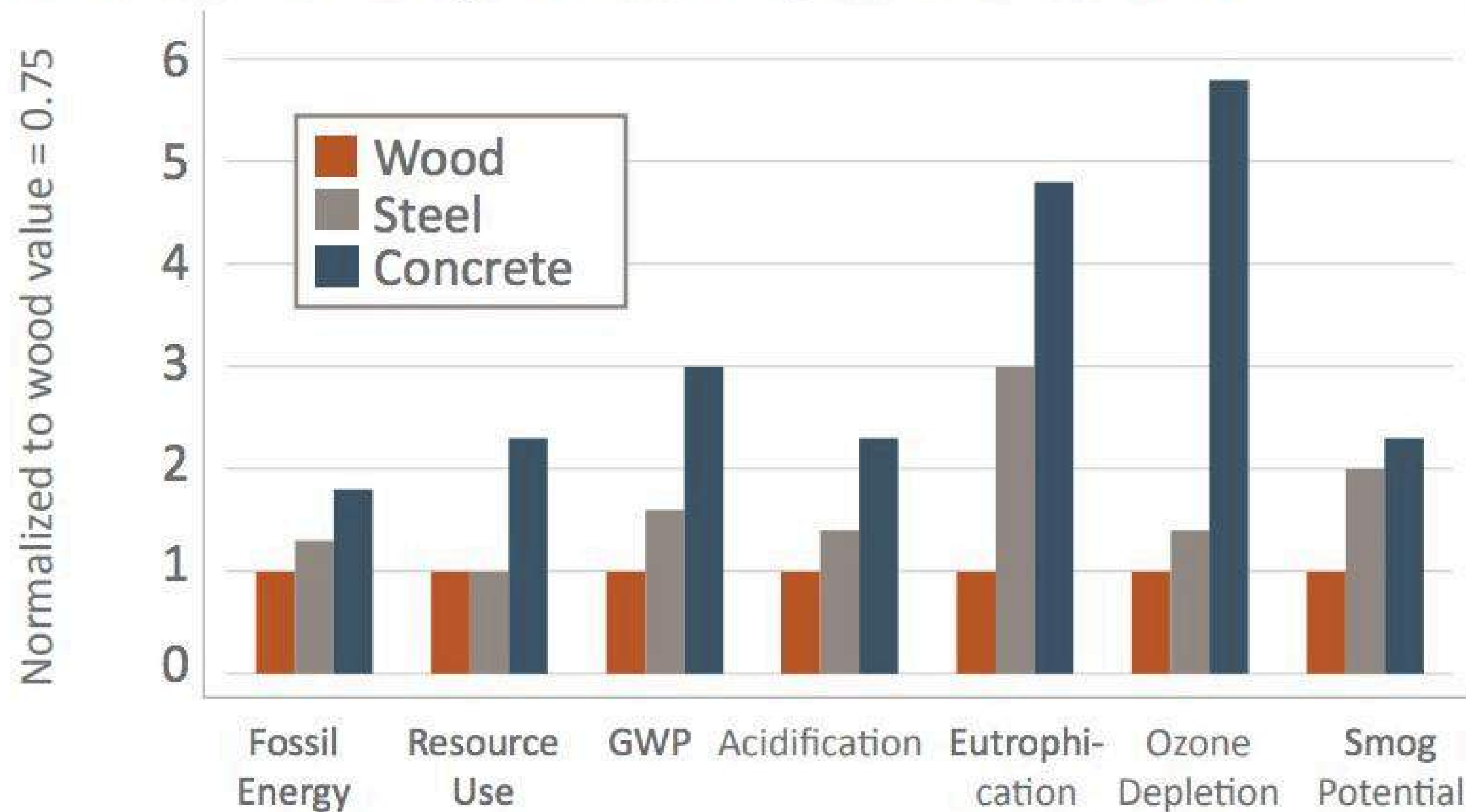
3

Bespoke Installation Services

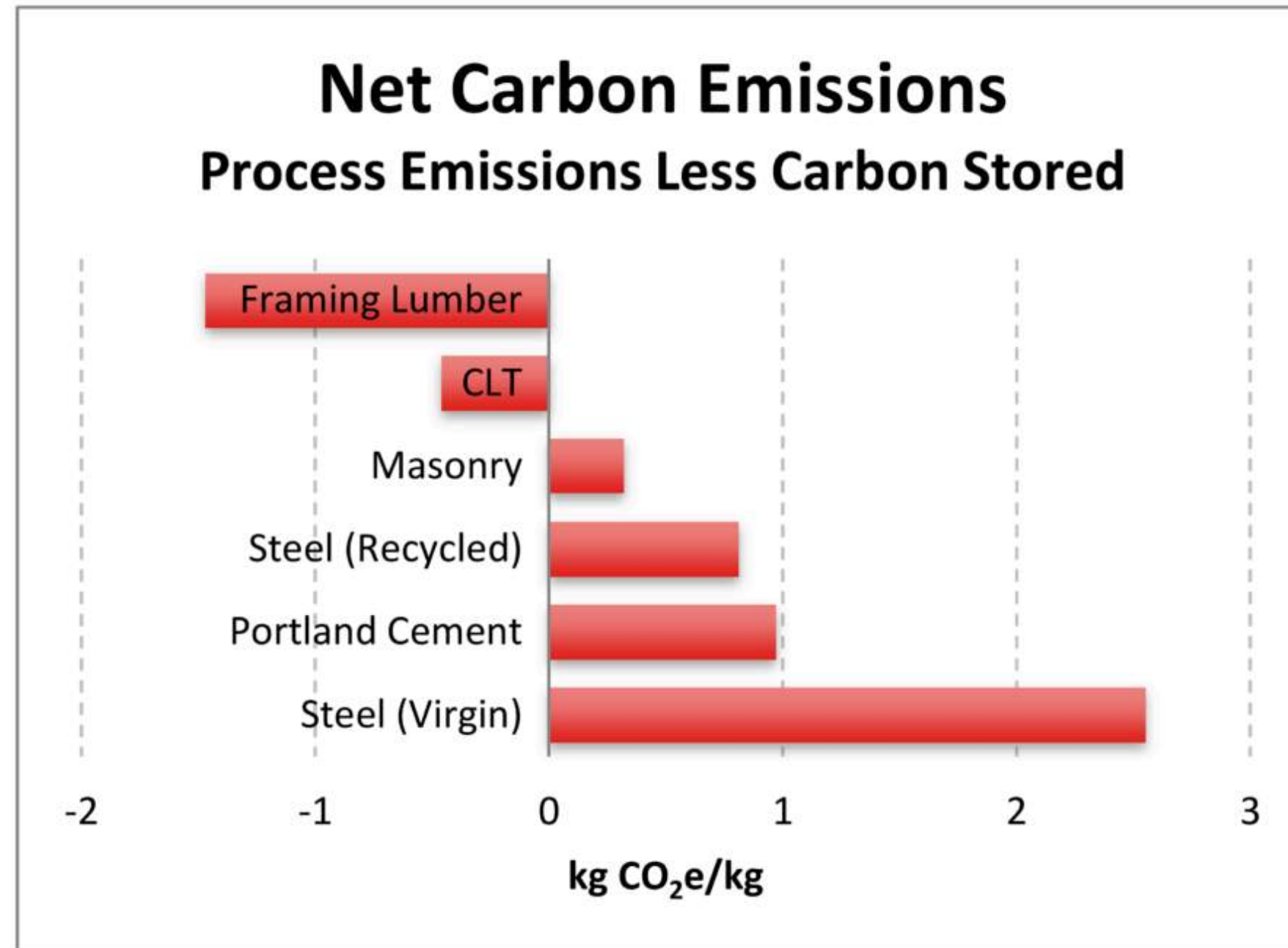
We offer personalized installation services that ensure precise and efficient execution of our structures. Our experts work diligently on-site, managing every detail for a seamless transition from design to reality.

THE WOOD SOLUTION

Environmental Impact of Wood, Steel and Concrete



Sustainability & Wood



Vendors For Leading Developers

We are approved, qualified and registered vendors for some of the largest developers in the region

Some of the largest developers in the region have a huge focus on sustainable, eco-friendly, quality construction. We are approved and qualified as vendors for these companies, with the majority of them being government related entities in UAE, Saudi Arabia and Oman.

We believe working with government related entities would be the ideal way to showcase the capability of our products & introduce them in a large scale format

EMAAR



DAMAC

EMKANN



SHARJAH INVESTMENT AND DEVELOPMENT AUTHORITY



DUBAI HOLDING

The Red Sea Development Company



دائرة الثقافة والسياحة
DEPARTMENT OF CULTURE AND TOURISM



OMRAN

ماجد الفطيم
MAJID AL FUTTAIM

الهيئة الملكية لمحافظة العيلا
ROYAL COMMISSION FOR ALULA



REVOLUTIONIZING SKYLINES: SUSTAINABLE TIMBER FOR A GREENER MIDDLE EAST

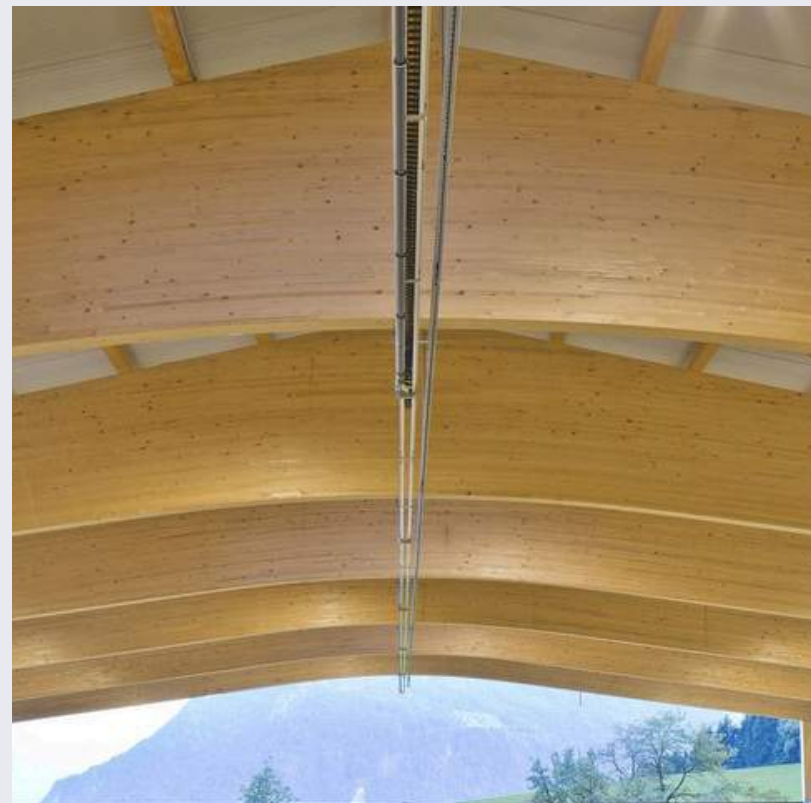
STRUCTURAL MASS TIMBER

WWW.PINEWOOD.CO.AE

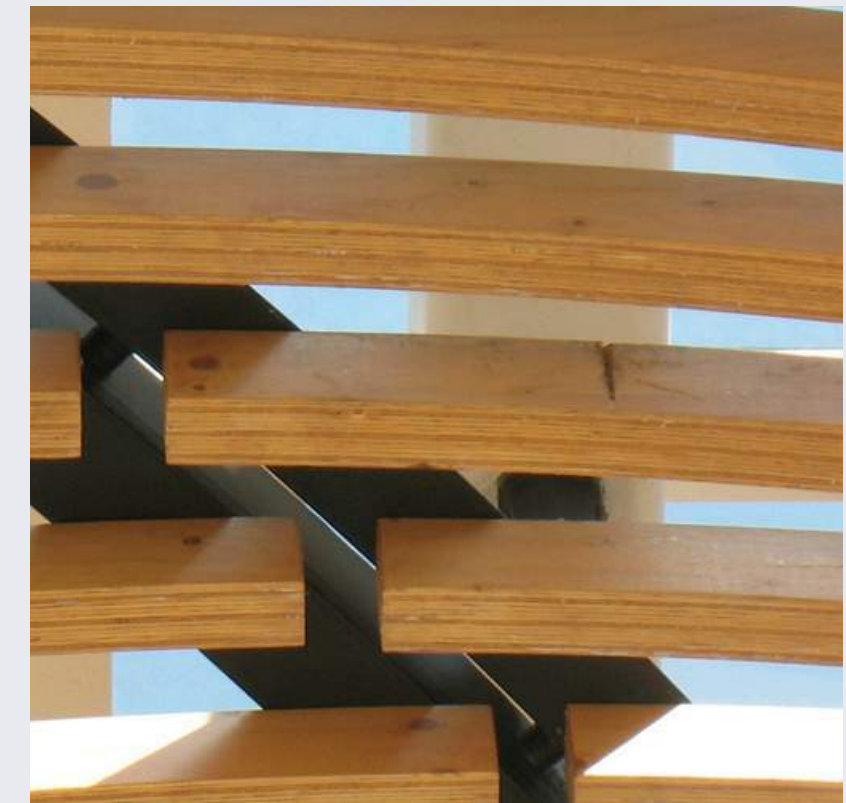
Structural Wood Products



**Cross
Laminated
Timber**



**Glue
Laminated
Timber
(Glulam)**



**Laminated
Veneer
Lumber (LVL)**



Glue Laminated Timber (Glulam)

- Beam and column structural elements
- Arched roof systems and trusses
- Long-span and curved architectural features
- Bridge components and heavy construction
- Exposed wood aesthetic for interiors

Strength Without Compromise

Glulam can be used to build large pieces and unique shapes (straight or curved) that are valued for their mechanical strength, dimensional stability and aesthetic qualities.

Design Flexibility

Due to its high load-bearing capacity and low weight, glulam can be used to create large open spaces. It can be used to create curved beams and arches

Eco-Friendly & Sustainable

Glulam promotes better use of forest resources, because it is manufactured with small pieces of wood that likely would not be used otherwise. Furthermore, most glulam manufacturers use wood from reforested forests.



Cross Laminated Timber (X-Lam)

- Load-bearing walls, floors, and roofs
- Multi-story and high-rise construction
- Efficient prefabrication and modular design
- Sustainable and environmentally friendly building
- Aesthetic appeal with exposed wood

Multi-Functional Elements

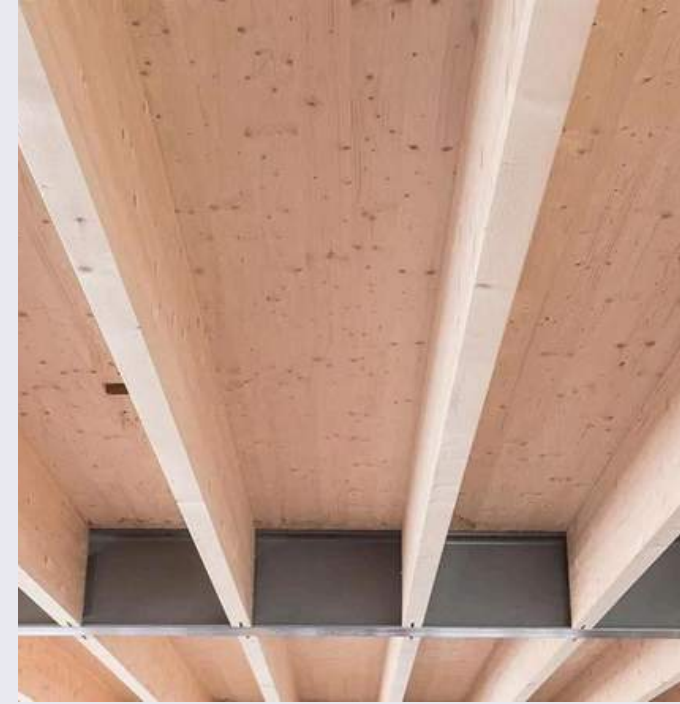
The panels can function as walls, floors, furniture, ceilings, and roofs; CLT's thickness and length can be adaptable to the demands of each project.

Eco-Friendly & Sustainable

It's a sustainable material because it's composed of wood, a renewable resource (usually from reforestation), and doesn't require the burning of fossil fuels during its production.

Rapid Construction

Time on construction sites are much shorter than traditional construction methods. It is a quick and dry process, with very little waste generation, superior quality and better aesthetically



Laminate Veneer Lumber (LVL)

- Lightweight yet high-strength structural components
- Straight and dimensionally stable members
- Header and beam applications
- Prefabricated wall and floor systems
- Alternative to solid-sawn lumber
- More uniform than glulam

High strength-to-weight ratio

LVL boasts an impressive strength-to-weight ratio, making it a preferred choice for load-bearing applications such as beams, headers, joists, and columns in both residential and commercial construction.

Dimensional stability

Stability helps maintain straight, true, and uniform components throughout the construction process, resulting in a higher quality finished product with fewer callbacks and less maintenance over time, which means it resists warping, twisting, and shrinking

Eco-Friendly & Sustainable

By utilizing fast-growing, renewable wood species and transforming them into high-performance engineered products, LVL helps to conserve old-growth forests and reduce the overall environmental impact of construction projects

WHY MODULAR

SPEED OF CONSTRUCTION

- Modular construction allows a large amount of work to be made in a factory while sitework and foundations start on site. This time-saving benefit speeds up construction while still being efficient.
- There is potential to save 30 to 60 percent of overall schedule through a modular approach.

SUSTAINABLE & ECO-FRIENDLY

- Modular Construction & Prefab Timber can benefit the climate in many ways:
- Trees capture and store carbon even as a built environment
 - Timber as a building material has a very low carbon footprint
 - These products can be used instead of high carbon emitting materials like concrete in many cases
 - Overall project timelines reduce, significantly reducing on material wastage, labour and machinery use, impacting the overall eco-friendliness of a project

HIGH QUALITY

- Use of high quality durable materials produced and fitted in a factory environment provide higher quality of construction, finishes and workmanship
- Less on-site human error
- Better energy efficiency & overall structure quality

COLLECTION OF DIFFERENT PROJECT EXAMPLES BUILT FOR VARIOUS PURPOSES

RECENT PROJECTS

WWW.PINEWOOD.CO.AE

Khorfakkan (UAE) – LUX* Al Jabal

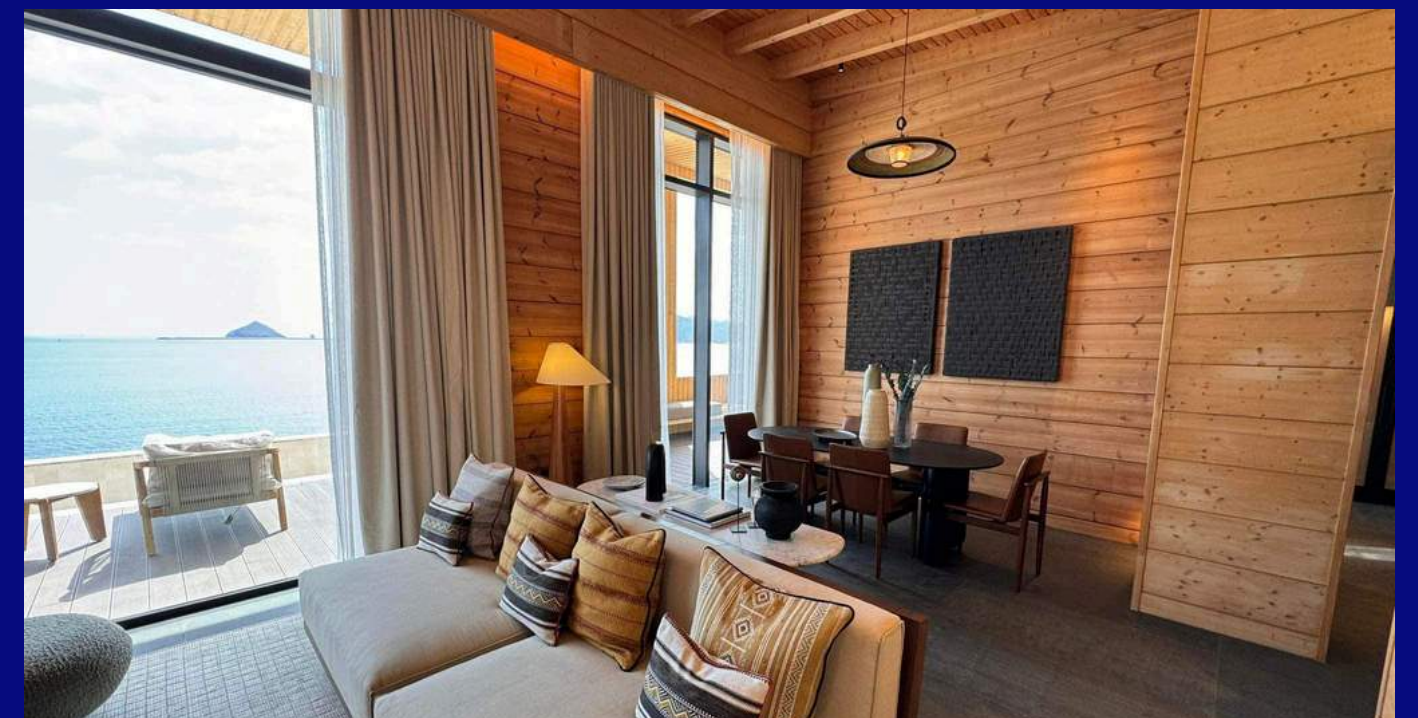


Client: Shurooq (Sharjah Investment & Development Authority)

On-Going

Supply of shell & core – log cabins (100% Wood)

- 45 x accommodation unit shell and core
- Beach shack restaurant
- Timber cladding with UV treatment for all units





Qatar Luxury Villas

Client: UCC / Hilton Group

Location: Doha, Qatar

Completed: 2022 October

The scope for this project was in relation to shell & core construction consisting of Glulam Beams and CLT Panels. These VIP villas that were going to be used as part of the FIFA 2022 World Cup.

Materials were manufactured in Austria and shipped across for installation. We provided supply, and installation.

Ritz Carlton – Maldives



Client: Pontiac Land Group

Completed: August 2021

Supply of mass timber elements for all accommodation units:

- 100 x accommodation unit shell and core
- Beach shack restaurant
- Timber cladding with UV treatment for all units

Mysk Moon Retreat



Client: Sharjah Investment & Development Authority

Completed: August 2021

SHUROOQ (Sharjah Investment & Development Authority) contracted Pine Wood for the supply & installation of glamping domes & tents:

- 10 Glamping Domes (7 with private pools)
- 6 Glamping Tents (1 bed, 2 bed units)
- Full self-serviced with luxury bathrooms & bbq facilities
- 6 Eco-Tents (2 bedroom and 1 bedroom units)

Hatta Dome Park

Client: Dubai Holding / Hatta Resorts

Completed: September 2024

Complete Renovation:

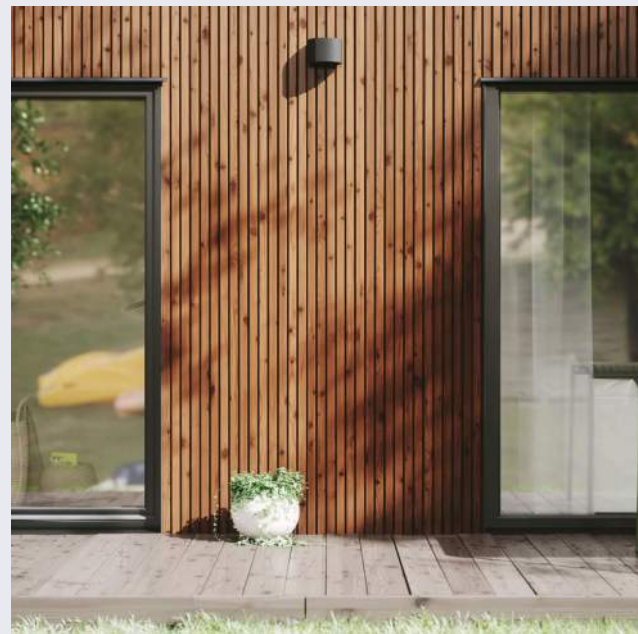
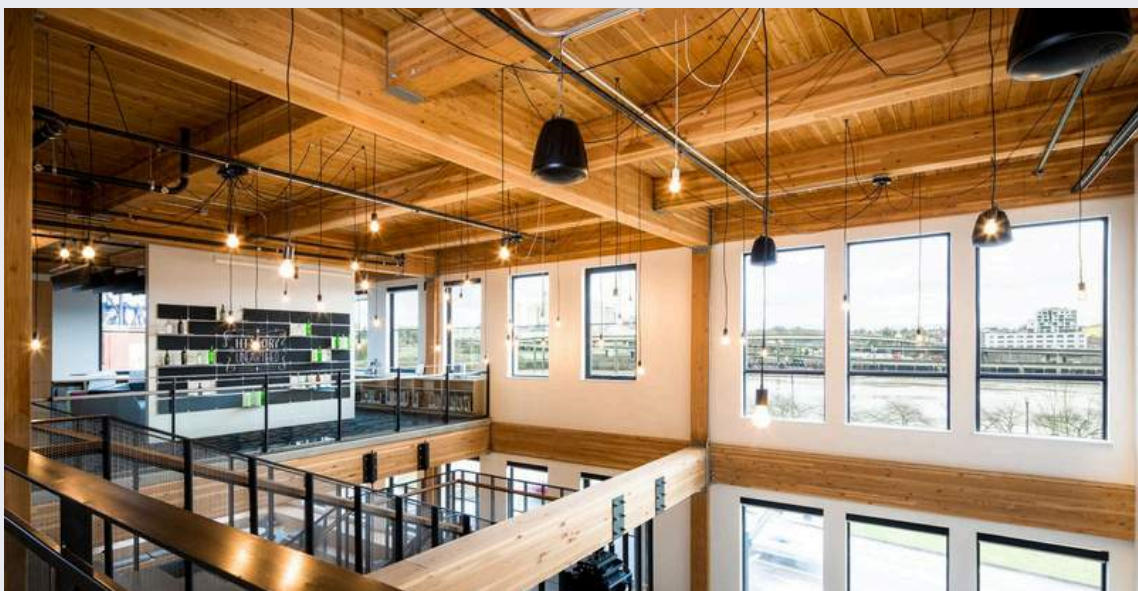
15 x Glamping 40sqm Domes

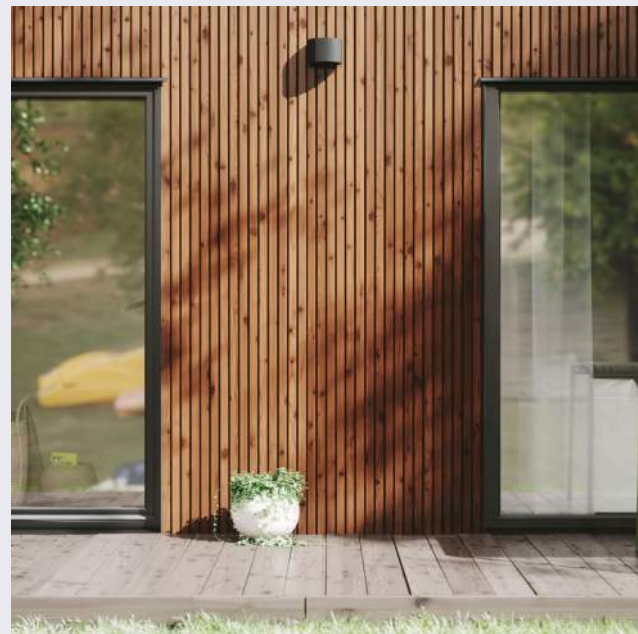
1 x Security Office 20sqm Dome

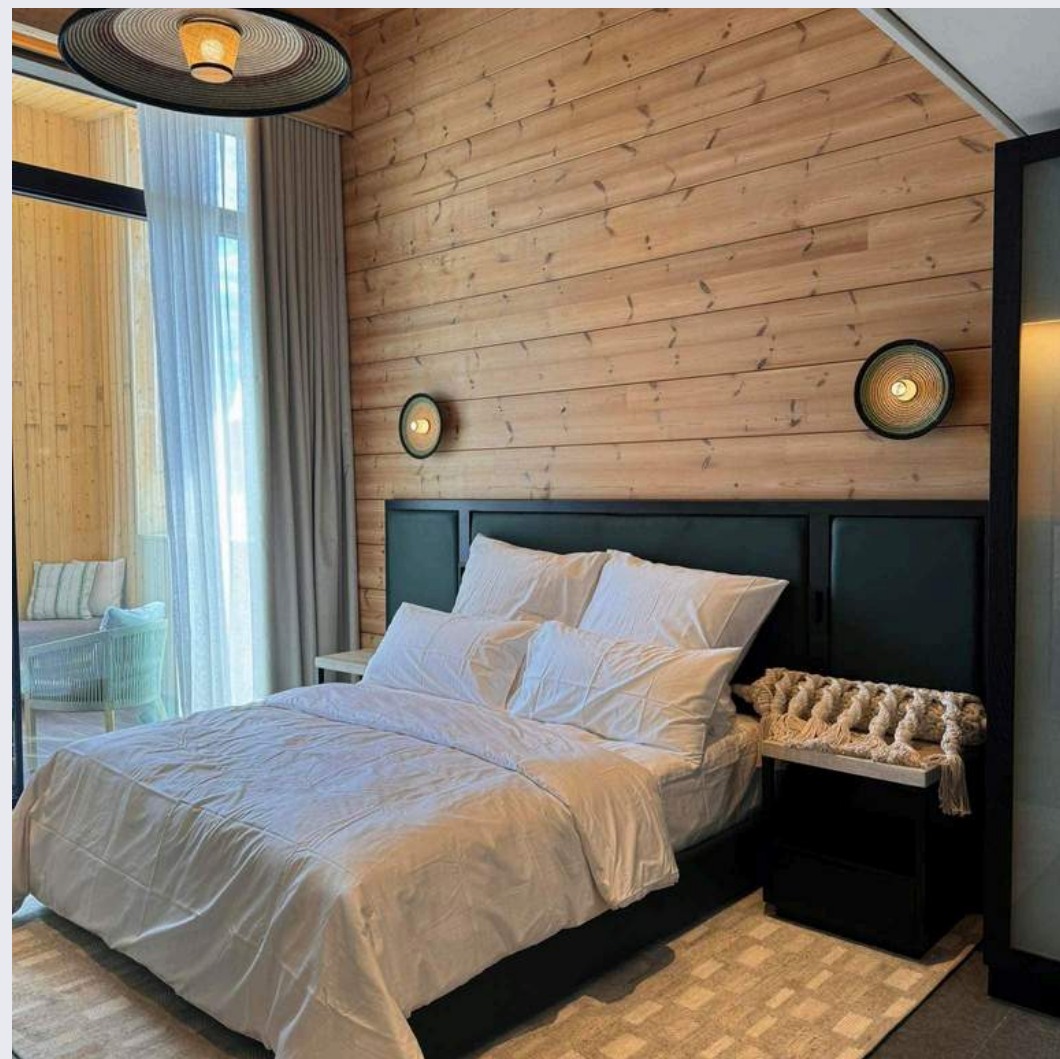


Middle East Glulam Projects









Our Glamping Products

Glamping Safari Tents

Luxury eco-tents for glamping or safari projects built to last using high quality sustainable materials

Glamping Domes

High Quality Geodesic Glamping Domes that are highly customisable, long lasting & stunning



Glamping Safari Tents



Whether you call them luxury safari tents, glamping tents, eco cabins or eco tents, our range redefines experiential tourism accommodation.

Our Tents are:

- Eco-Friendly
- Quick to Build
- Customisable
- Provide Great Return on Investment
- Long Lasting with long warranty periods



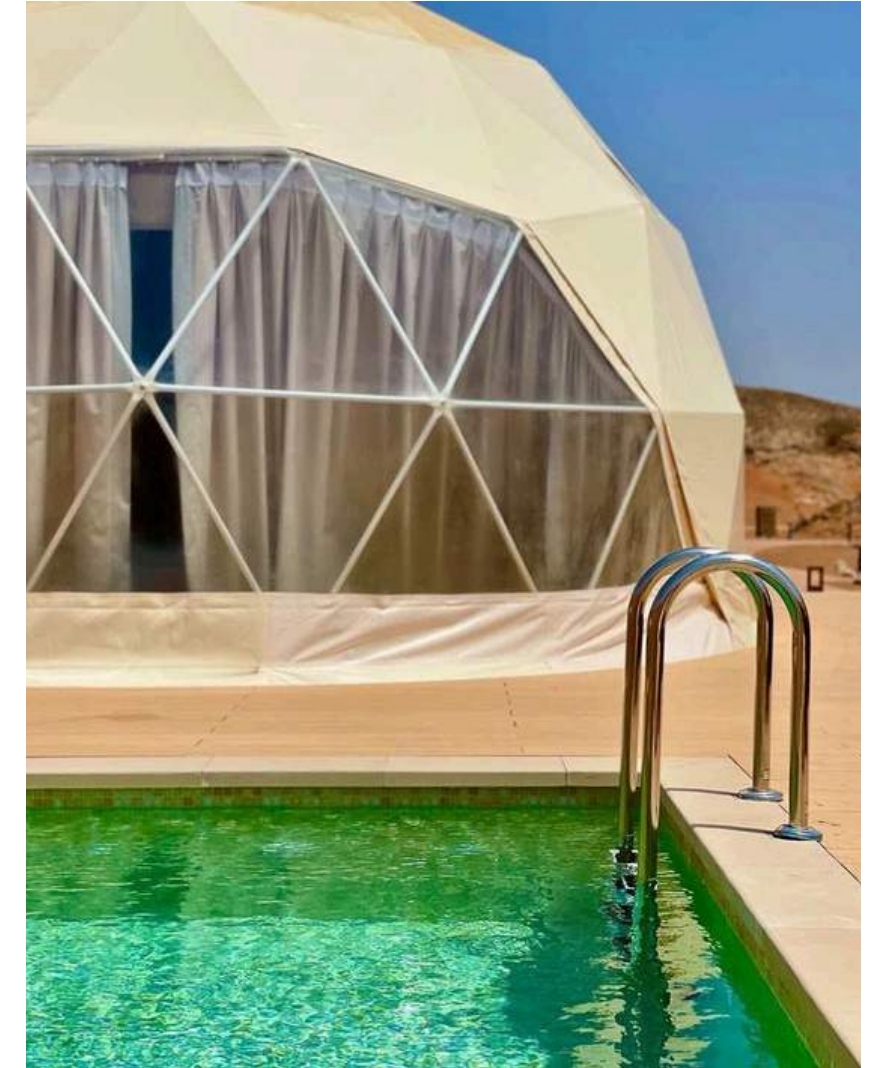
Glamping Domes



Our Glamping domes are line of self-assembly products that revolutionise the hospitality industry.

These elegant geodesic dome solutions are perfect for all glamping purposes and can be easily adapted into eco-living pods, garden studios or lounges.

Coming with an array of options such as prefabricated bathroom kits, furniture sets & accessories, it can be as simple or as luxurious as you need for your project



Contact Us

Address

1502A Al Musalla Tower
Bur Dubai
Dubai
U.A.E

Web

info@pinewood.co.ae
www.pinewood.co.ae

Phone Number

+971 4 335 4408
+971 50 523 2884